

Alaska Department of Fish and Game

Habitat Section
Southeast Region



114-27-10300 Tributary 1

ADDITION

Water body name:

Survey date: 6/23/2022

Quad: Juneau A-4

Species & Lifestage:

Upper Reach Latitude: 58.086041 **Longitude:** -135.280155

Survey crew: FC, RR

Lower Reach Latitude: 58.089253 **Longitude:** -135.290362

Findings: We surveyed this uncataloged stream using a backpack electrofisher and GPS and captured juvenile coho salmon. The tributary stream is fed by several secondary tributaries emerging from the forest and flows through a wetland to connect with Spasski Creek in the intertidal (Table 1; Figures 1, 2).

Recommendations: Add this uncataloged stream to the anadromous waters catalog for rearing coho salmon (Figure 3).

Nomination: Pending

Table 1.—114-27-10300 tributary 1 survey data.

Waypoint	Latitude	Longitude	Notes	Stream Width ft	Stream Substrate	Habitat Features	Gradient %	Sample Effort	Sample Results
827	58.085721	-135.279901	Start of survey on secondary tributary. Potential coho habitat but no fish found.	4-6	Small Gravel Large Gravel	Incised Channel	4-6	EF	No Fish
828	58.086111	-135.280200	On primary tributary of Spasski. Channel in wetland near intertidal, fed by several secondary tributaries emerging from surrounding forest.		Fine Organic			EF	2 CO



Figure 1.—Juvenile coho salmon captured at waypoint 828.



Figure 2.—Gravel channel of secondary tributary at waypoint 827.

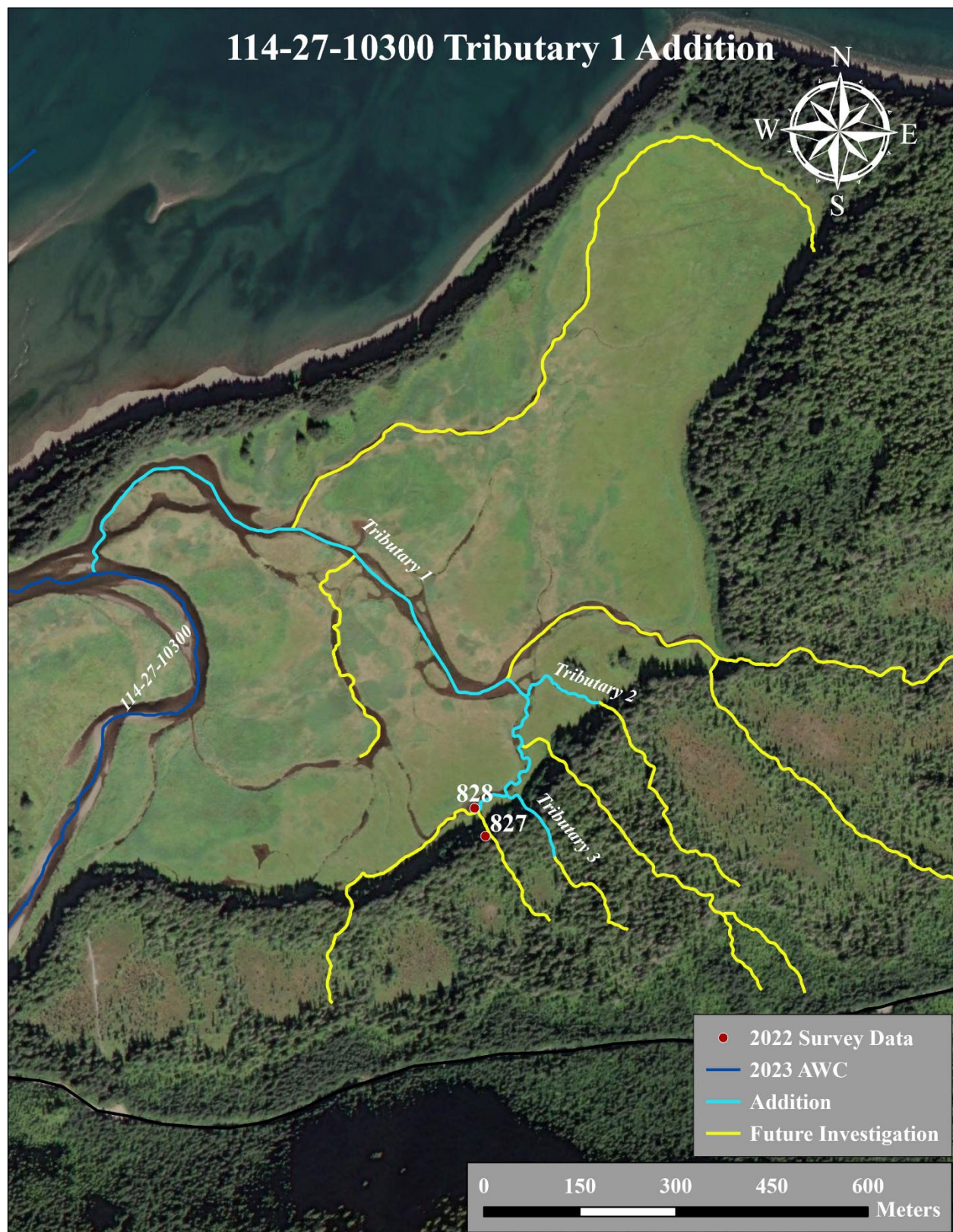


Figure 3.—114-27-10300 tributary 1 addition map.